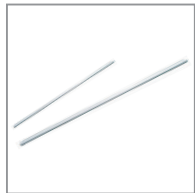


BYD Lighting

Product Content :Application Products

TA/B Series



TB-T8ES250



TA-08AA-00A

GL Series



GL-04(E27/E26)



GL-04(B22)/06(B22)



GL-06 (E27/E26)



GL-14BA



AL-C11A300

CL Series



CL-10B

Others



ML-31AE051



LH-40FC051



LH-88J1550



ZSP120/150-32/48JF

TL Series



CL-20T A



CL-26T A



CL-20T

SL Series



SL-14C3050SXC1

EL Series



EL-27C6050



EL-27C9050



EL-27CC050



EL-27CE050



EL-34A6550



EL-34A9550



EL-34AC550



EL-34AG850



EL-34AE550



EL-34AK850



EL-34AJ050

LED Tube Series



Application Scope

As a chief substitute for traditional tubes, the LED tube is designed to integrate an optical system and driver. The product's long lifetime minimizes the hassle of replacement cycles while lowering maintenance costs. Compared with traditional products, BYD LED tube is a harmless lighting product, no Hg and UV. It is ideally suited for households, office buildings, plants, warehouses.

Technical Parameters

Items	Parameters
P/N	TB-T8ES250
Size	1513×Φ26mm
Power	25W
Weight	457g
Luminous Flux	2,500lm (Day Light)
CCT	6,500K;5,700K (Day Light)
Viewing Angle	120°
Design Life	40,000 Hr
Voltage	100-240V AC
Ambient Temperature	5℃~40℃



LED Tube Series



Application Scope

As a chief substitute for traditional tubes, the LED tube is designed to integrate an optical system and driver. The product's long lifetime minimizes the hassle of replacement cycles while lowering maintenance costs. Compared with traditional products, BYD LED tube is a harmless lighting product, no Hg and UV. It is ideally suited for households, office buildings, plants, warehouses.

Technical Parameters

Items	Parameters
P/N	TA-08AA-00A
Size	845×27×30mm
Power	20W
Weight	380g
Luminous Flux	1,900lm (Day Light/Bright White) 1,650lm (Warm White)
CCT	6,500K;5,700K (Day Light) 5,000K;4,000K (Bright White) 3,000K;2,700K (Warm White)
Viewing Angle	120°
Design Life	40,000 Hr
Voltage	100-240V AC
Ambient Temperature	5℃~40℃



LED Globe

Application Scope

The LED globe will eventually become the chief substitutes for incandescent lamps. With the compact and beautiful appearance, the globe has great heat-sinking properties. It is also mothproof rated. In addition, it can provide soft and symmetrical light beam, but no strobe. The globe can be widely used in places, such as residential homes, markets, hotels/motels, and offices.

Technical Parameters

Items	Parameters	
P/N	GL-06	GL-06
Size	110×Φ60mm(E27/B22)/ 108×Φ60mm(E26)	
Power	6.9W	
Weight	145g	150g
Luminous Flux	560lm (Day Light/Bright White)	
	550lm (Warm White)	
CCT	6,500K;5,700K (Day Light)	
	5,000K;4,000K (Bright White)	
	3,000K;2,700K (Warm White)	
Design Life	40,000 Hr	
Voltage	100-250V AC	
Ambient Temperature	5°C~40°C	
Cap	E27/E26	B22
CRI	80	



LED Globe

Application Scope

The LED globe will eventually become the chief substitutes for incandescent lamps. With the compact and beautiful appearance, the globe has great heat-sinking properties. It is also mothproof rated. In addition, it can provide soft and symmetrical light beam, but no strobe. The globe can be widely used in places, such as residential homes, markets, hotels/motels, and offices.

Technical Parameters

Items	Parameters	
P/N	GL-04	GL-04
Size	108×Φ59mm(E27/B22)/ 106×Φ59mm(E26)	
Power	4.8W	
Weight	95g	102g
Luminous Flux	440lm (Day Light/Bright White)	
	350lm (Warm White)	
CCT	6,500K;5,700K (Day Light)	
	5,000K;4,000K (Bright White)	
	3,000K;2,700K (Warm White)	
Design Life	40,000 Hr	
Voltage	100-250V AC	
Ambient Temperature	5°C~40°C	
Cap	E27/E26	B22
CRI	80	



LED Globe

Application Scope

The LED globe will eventually become the chief substitutes for incandescent lamps. With the compact and beautiful appearance, the globe has great heat-sinking properties. It is also mothproof rated. In addition, it can provide soft and symmetrical light beam, but no strobe. The globe can be widely used in places, such as residential homes, markets, hotels/motels, and offices.

Technical Parameters

Items	Parameters
P/N	GL-14BA
Size	87×Φ43mm(E27)/ 85×Φ43mm(E26)
Power	3.2W
Weight	48g
Luminous Flux	250lm (Day Light/Bright White) 220lm (Warm White)
CCT	6,500K;5,700K (Day Light) 5,000K;4,000K (Bright White) 3,000K;2,700K (Warm White)
Design Life	15,000 Hr
Voltage	100-250V AC
Ambient Temperature	5℃~40℃
Cap	E27/E26



LED Globe

Application Scope

The LED globe will eventually become the chief substitutes for incandescent lamps. With the compact and beautiful appearance, the globe has great heat-sinking properties. It is also mothproof rated. In addition, it can provide soft and symmetrical light beam, but no strobe. The globe can be widely used in places, such as residential homes, markets, hotels/motels, and offices.

Technical Parameters

Items	Parameters
P/N	AL-C11A300
Size	108×Φ39mm
Power	3.2W
Weight	52g
Luminous Flux	200lm (Day Light) 150lm (Warm White)
CCT	6,500K;5,700K (Day Light) 3,000K;2,700K (Warm White)
Design Life	40,000 Hr
Voltage	100-240V AC
Ambient Temperature	5℃~40℃
Cap	E27/E14



LED Ceiling Light



Application Scope

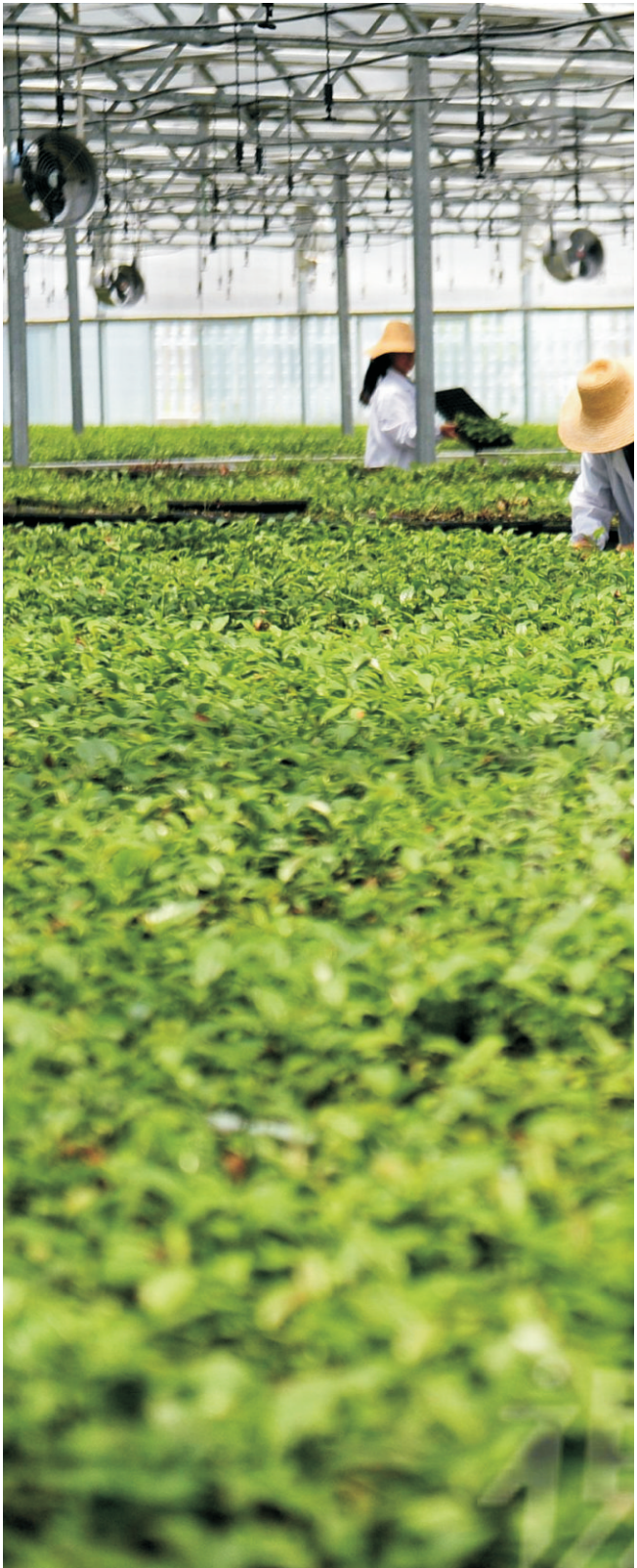
The LED ceiling light will eventually become the chief substitutes for fluorescent lights. In the product, high-tech light guide plate (LGP) is used to provide shadowless lighting. There is no mercury in the product, so it is a green image. The ceiling light can be used in places, such as hotels/motels, offices, auditorium, and schools.

Technical Parameters

Items	Parameters
P/N	CL-10B
Size	1,200×100×41mm
Power	30W
Weight	1.6kg
Luminous Flux	1,850lm (Day Light/Bright White)
	1,500lm (Warm White)
CCT	6,500K;5,700K (Day Light)
	5,000K;4,000K (Bright White)
	3,000K;2,700K (Warm White)
Design Life	40,000 Hr
Voltage	100-240V AC
Ambient Temperature	5°C~40°C



LED Plant-growth Light



Application Scope

The BYD LED plant lamp is the best choice to replace the traditional fluorescent lighting. The use of high-tech light guide technology, provides a dazzling diffuse light shadow. Mercury free, more environmentally healthy. The utility model can be widely used in the field of plant tissue culture and plant lamp.

Technical Parameters

Items	Parameters
P/N	ZSP120/500-32/48JF
Size	1100×345×72mm
Power	500W
Weight	13.9Kg
Whole lamp luminous flux	24500lm
Light output	920(Umoles/ m² /s)/305mm
	481(Umoles/ m² /s)/457mm
	333(Umoles/ m² /s)/610mm
Light ratio(Red, blue, purple)	4:4:1
Light ratio (Red, blue)	1:1
Power Factor	0.9
Emitting Angle	90°
Design Lifetime	40000 Hr
Voltage	100-240V AC
Ambient Temperature	-15°C~60°C
Control form	Mechanical switch



LED Mining Lamp



Application Scope

The LED Mining Lamp will eventually become the chief substitutes for fluorescent lights. In the product, high-tech light guide plate (LGP) is used to provide shadowless lighting. There is no mercury in the product, so it is a green image. The LED Mining Lamp can be used in places, such as factory, mine, toll station, fueling station, super mall and others.

Technical Parameters

Items	Parameters
P/N	ML-31AE051
Size	317×312×234mm
Power	175W
Weight	12kg
Luminous Flux	19,000lm
CCT	6,000K
Viewing Angle	60°
Design Life	50,000 Hr
Voltage	100-277V AC
Ambient Temperature	-20℃~50℃



LED Explosion-proof Lamp



Application Scope

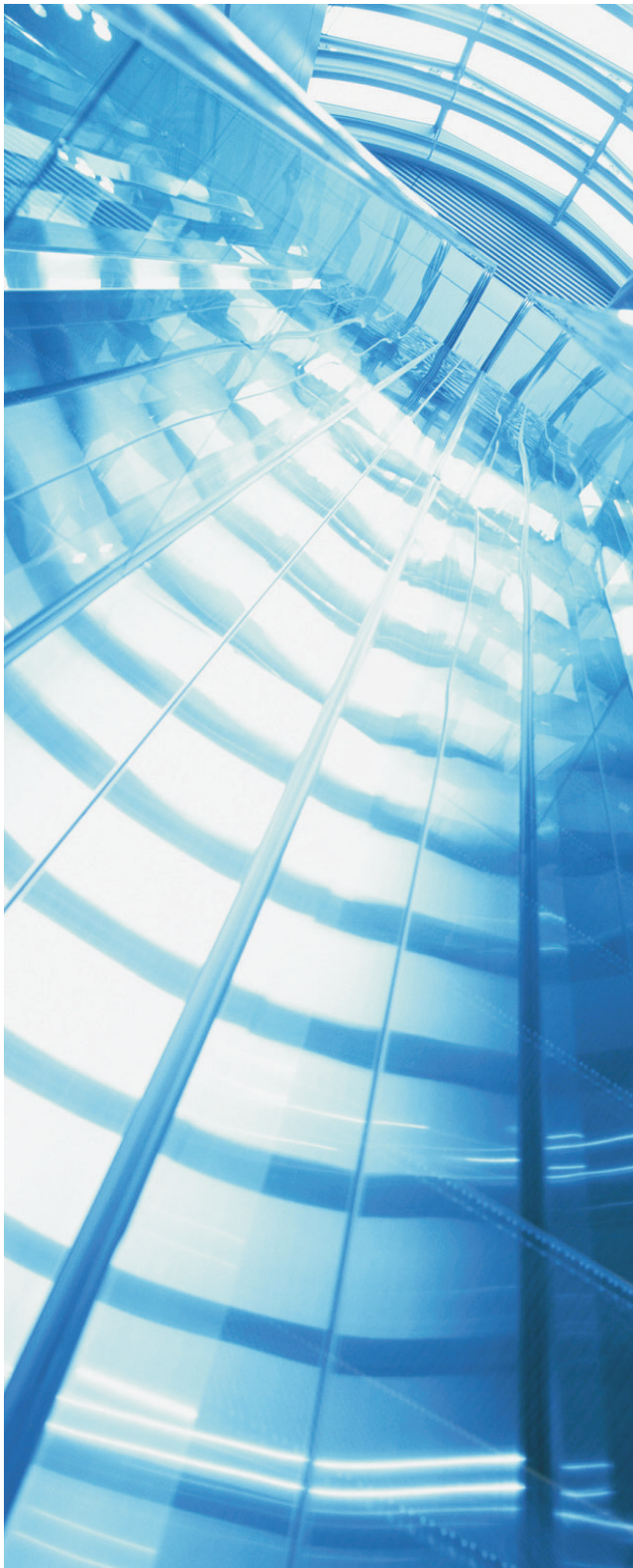
The LED Explosion-proof Lamp will eventually become the chief substitutes for fluorescent lights. There is no mercury in the product, so it is a green image. The light can be used in factories, warehouses, auditorium, gas station, parking lots and the indoor plaza area floodlighting.

Technical Parameters

Items	Parameters
P/N	LH-40FC051
Size	420×400×143mm
Power	130W
Weight	8kg
Luminous Flux	13,000lm
CCT	5,000k
Design Life	40000 Hr
Voltage	100-270V AC
Ambient Temperature	-40℃~40℃
IP	Ip65
Detection angle and ranging	90° ; 8-10m
Working mode	people come: 100% lumen
	people go: 30% lumen



LED Fixed Luminaires



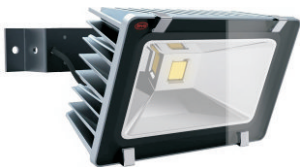
Application Scope

The LED light will eventually become the chief substitutes for fluorescent lights. There is no mercury in the product, so it is a green image. The CL-20T can be used in places, factory/warehouse/auditoria lighting, exterior area floodlighting.The CL-20T A is used for tunnel lighting.

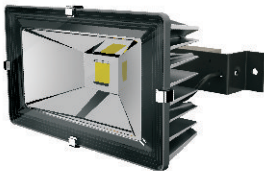
Technical Parameters

Items	Parameters	
P/N	CL-20T	CL-20T A
Size	350×203×230mm	
Power	60W	
Weight	6.7kg	
Luminous Flux	5,400lm (Day Light)	
	4,500lm (Warm White)	
CCT	4,000-6,000K (Day Light)	
	2,500-3,500K (Warm White)	
Viewing Angle	120° X70°	
Design Life	20,000 Hr	
Voltage	100-240V AC	
Ambient Temperature	5℃~40℃	
IP	IP44	IP65

CL-20T



CL-20T A



LED Fixed Luminaires



Application Scope

The LED light will eventually become the chief substitutes for fluorescent lights. There is no mercury in the product, so it is a green image. The light is used for tunnel lighting.

Technical Parameters

Items	Parameters
P/N	CL-26T A
Size	572×284×225mm
Power	110W
Weight	13kg
LED Quantity	2 pcs
Luminous Flux	9,700lm
CCT	4,000-6,000K
Viewing Angle	110° X120°
Design Life	20,000 Hr
Voltage	100-240V AC
Ambient Temperature	-20℃~50℃
IP	IP65



LED Street Light



Application Scope

The LED street light will eventually become the chief substitutes for high pressure sodium vapour lamps. Its components can operate in a low voltage, so it is safe when operating. The light has greatly energy-saving capacity. In addition, the product features high luminous efficiency and low lumen depreciation. When it is operating, the lighting is distributed properly, showing a unique optical design. The light can provide soft, symmetrical and directional lighting without strobe.

Technical Parameters

Items	Parameters	
P/N	EL-27CC050	EL-27CE050
Size	530×270×128mm	582×270×128mm
Power	120W	150W
Weight	5.8kg	6.3kg
LED Quantity	56 pcs	70 pcs
Luminous Flux	12,000lm	13,200lm
CCT	2,700-3,500K	2,700-3,500K
Luminous Flux	13,200lm	16,500lm
CCT	4,000-6,500K	4,000-6,500K
IP	IP65	
Light Type	Type III, medium	
Design Life	100,000 Hr	
Voltage	100-277V AC	
Ambient Temperature	-20℃~45℃	

EL-27CC050

EL-27CE050



LED Street Light



Application Scope

The LED street light will eventually become the chief substitutes for high pressure sodium vapour lamps. Its components can operate in a low voltage, so it is safe when operating. The light has greatly energy-saving capacity. In addition, the product features high luminous efficiency and low lumen depreciation. When it is operating, the lighting is distributed properly, showing a unique optical design. The light can provide soft, symmetrical and directional lighting without strobe.

Technical Parameters

Items	Parameters		
P/N	EL-34A6550	EL-34A9550	EL-34AC550
Size	546×340×70mm	608×340×70mm	670×340×70mm
Power	62W	95W	125W
Weight	5.3kg	5.8kg	6.3kg
LED Quantity	28 pcs	42 pcs	56 pcs
Luminous Flux	6,200lm	9,500lm	12,500lm
CCT	2,700-3,500K	2,700-3,500K	2,700-3,500K
Luminous Flux	6,800lm	10,500lm	13,800lm
CCT	4,000-6,500K	4,000-6,500K	4,000-6,500K
IP	IP65		
Light Type	Type II, medium		
Design Life	50,000 Hr		
Voltage	100-240V AC		
Ambient Temperature	-20℃~45℃		

EL-34A6550

EL-34A9550

EL-34AC550



LED Street Light

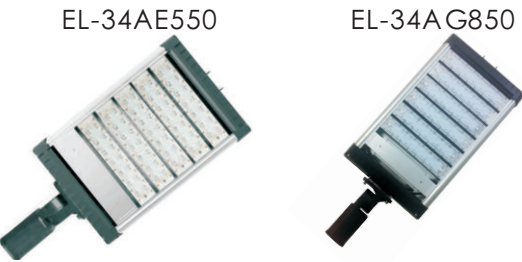


Application Scope

The LED street light will eventually become the chief substitutes for high pressure sodium vapour lamps. Its components can operate in a low voltage, so it is safe when operating. The light has greatly energy-saving capacity. In addition, the product features high luminous efficiency and low lumen depreciation. When it is operating, the lighting is distributed properly, showing a unique optical design. The light can provide soft, symmetrical and directional lighting without strobe.

Technical Parameters

Items	Parameters	
P/N	EL-34AE550	EL-34AG850
Size	732×340×70mm	792×340×70mm
Power	160W	190W
Weight	6.8kg	7.3kg
LED Quantity	70 pcs	84 pcs
Luminous Flux	16,000lm	19,000lm
CCT	2,700-3,500K	2,700-3,500K
Luminous Flux	17,600lm	20,900lm
CCT	4,000-6,500K	4,000-6,500K
IP	IP65	
Light Type	Type II, medium	
Design Life	50,000 Hr	
Voltage	100-240V AC	
Ambient Temperature	-20℃~45℃	



LED Street Light

The LED street light will eventually become the chief substitutes for high pressure sodium vapour lamps. Its components can operate in a low voltage, so it is safe when operating. The light has greatly energy-saving capacity. In addition, the product features high luminous efficiency and low lumen depreciation. When it is operating, the lighting is distributed properly, showing a unique optical design. The light can provide soft, symmetrical and directional lighting without strobe.

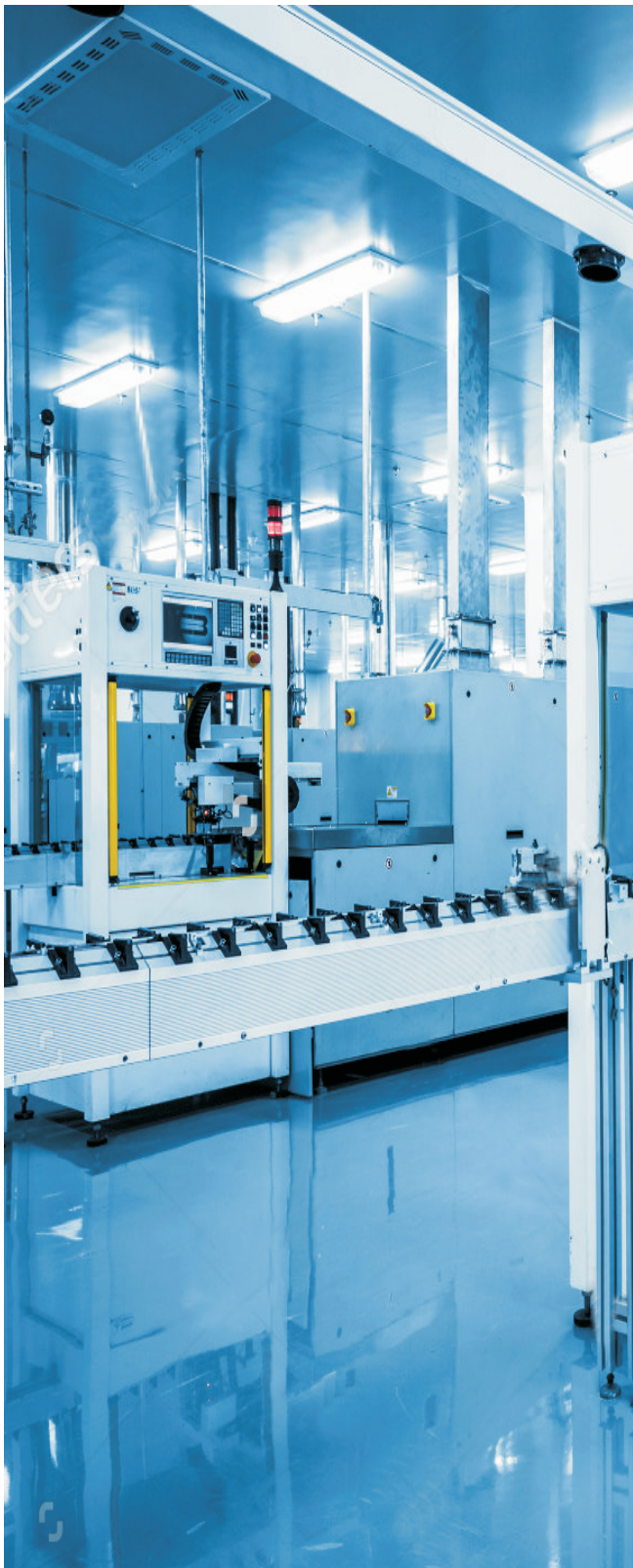
Application Scope

Technical Parameters

Items	Parameters	
P/N	EL-34AJ050	EL-34AK850
Size	856×340×70mm	918×340×70mm
Power	220W	255W
Weight	7.8kg	8.3kg
LED Quantity	98 pcs	112 pcs
Luminous Flux	22,000lm	25,500lm
CCT	2,700-3,500K	2,700-3,500K
Luminous Flux	24,200lm	28,000lm
CCT	4,000-6,500K	4,000-6,500K
IP	IP65	
Light Type	Type II, medium	
Design Life	50,000 Hr	
Voltage	100-240V AC	
Ambient Temperature	-20℃~45℃	



LED Light



Application Scope

The LED light will eventually become the chief substitutes for fluorescent lights. In the product, high-tech light guide plate (LGP) is used to provide shadowless lighting. There is no mercury in the product, so it is a green image. Be applied in professional lighting environment such as machining equipment.

Technical Parameters

Items	Parameters
P/N	LH-88J1550
Size	307×88×30mm
Power	12W
Weight	840g
Luminous Flux	910lm (Day Light)
CCT	5,700K (Day Light)
Emitting Angle	30°
Design Life	40,000 Hr
Voltage	24V DC
Ambient Temperature	-40℃~40℃



LED Street Light



Application Scope

The LED street light will eventually become the chief substitutes for high pressure sodium vapour lamps. Its components can operate in a low voltage, so it is safe when operating. The light has greatly energy-saving capacity. In addition, the product features high luminous efficiency and low lumen depreciation. When it is operating, the lighting is distributed properly, showing a unique optical design. The light can provide soft, symmetrical and directional lighting without strobe.

Technical Parameters

Items	Parameters	
P/N	EL-27C6050	EL-27C9050
Size	451×270×128mm	462×270×128mm
Power	60W	90W
Weight	4.8kg	5.3kg
LED Quantity	28 pcs	42 pcs
Luminous Flux	6,000lm	8,100lm
CCT	2,700-3,500K	2,700-3,500K
Luminous Flux	6,600lm	9,900lm
CCT	4,000-6,500K	4,000-6,500K
IP	IP65	
Light Type	Type III, medium	
Design Life	100,000 Hr	
Voltage	100-277V AC	
Ambient Temperature	-20℃~45℃	

EL-27C6050

EL-27C9050



Solar LED Street Light



Application Scope

TheBYD LED solar street light serves as a market leading of eco-friendly lighting, and it integrates solar energy into LED lighting. Product Features:1. No power consumption . 2. Eco-friendly and long lifetime. 3.No underground wiring, significantly lower operational and maintenance cost. 4.Safely invest in LED lighting. 5.High efficiency and low lumen depreciation, professional optics and thermal design. 6.Equipped with Fe-Li battery(small volume, long cycle life, wide temperature range, and deep DOD). 7. Optical and intelligent control.

Technical Parameters

Model	SL-14C3050 SXC1		Configur-ation	Street light (1PCS)+ Si-Fe module (1PCS)
Light Head	Parameters		Fe-Si Module	Parameters
P/N	SL-14C3050		P/N	NP-P140300_12V_4A_SV_IH
Weight	2kg		Weight	37kg/pcs
Power	40W		Power of Solar Panel	140W/pcs
Quantity of LED	14pcs		Battery	Fe-battery
Luminous Flux	2,600lm	3,000lm	Capability	150AH*3.2V*2
Operating Temperature	2,700-3,500K	4,000-6,500K	Operating Temperature	10℃~45℃
Operating Temperature	-20℃~50℃		Battery Lifespan	2,000Cycle(Ambient temperature)
Overhang Diameter	60mm		Performance Index	Parameters
IP	IP65/WF1		Continuous Time	24 Hr
Light Type	Type II , medium		Charging Time	8.6Hr (In a sunny day)
Size	391×140×85mm		Input Voltage for Light	12V DC
Design Life	50,000 Hr		Time Control	No Dimming

